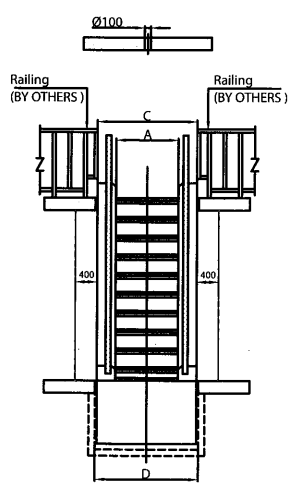
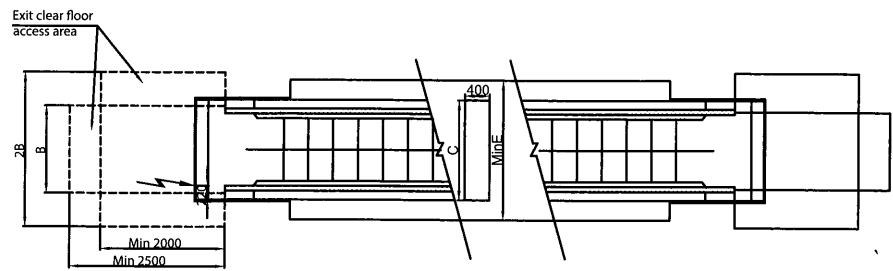
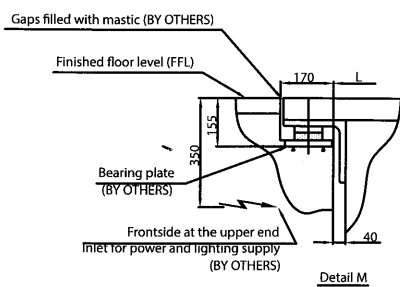
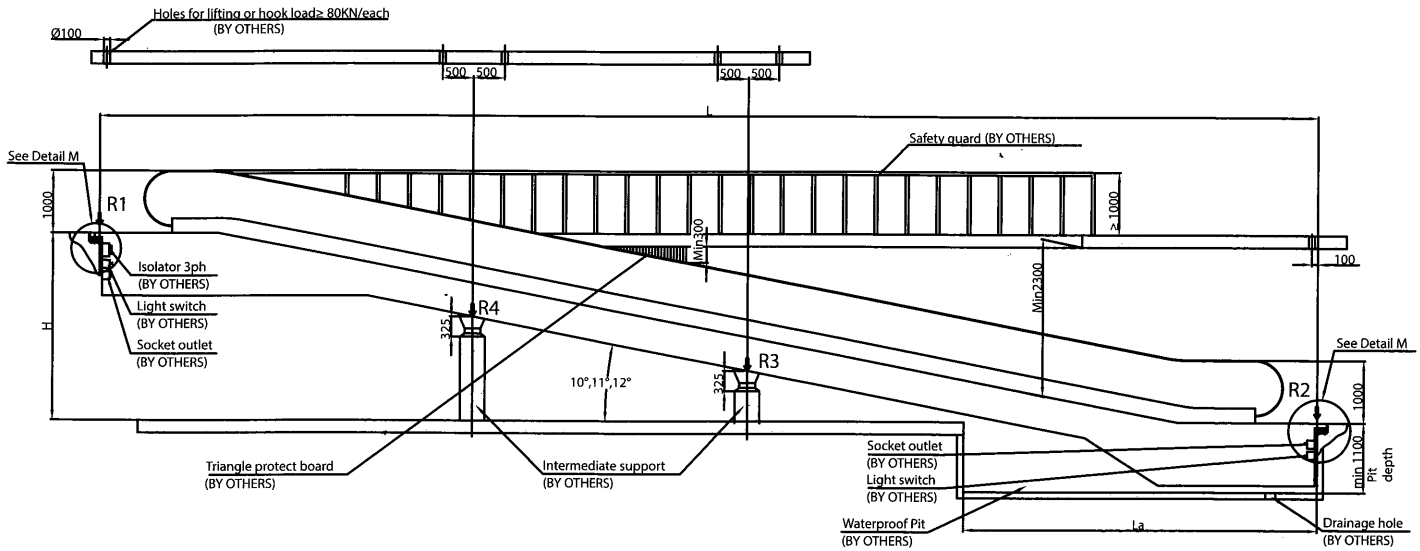


DCP10° - 12° Commercial Passenger - Travelator Layout Drawing



Type	A	B	C	D	E	K1	K2	S speed
DCP - 800 4800 p/h	800	1350	1400	1460	2200	15000	30000	V=0.5m/s
DCP -1000 6000 p/h	1000	1550	1600	1660	2400	15000	30000	

Inclination	10	11	12
L	Hx5.6713+4000	Hx5.1446+3900	Hx4.7046+3762
La	6000	5750	5400

As L>K1, one intermediate support is needed ;
As L>K2, two intermediate support are needed;

- Remarks:
- There should be no water in the pit, and the surface of the pit should be smooth and flat.
 - The building support at both end of travelator should keep in level.
 - If the two travelators are put in parallel, the gap between the two travelators should not less than 10mm.
 - All dimension in mm.